

Device configuration 57018:

Making settings for the CO2 sensor

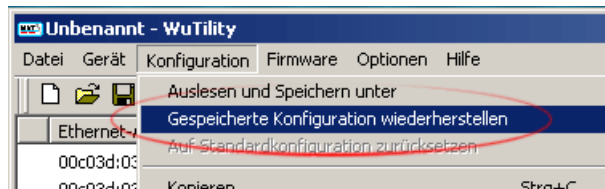
Automated method:

Download the appropriate XML configuration file for your device.

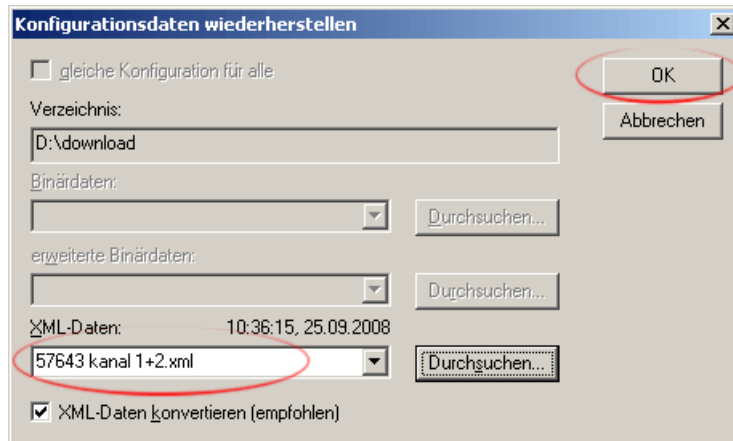


Compatible devices	Port 1	Port 2	Ports 1+2
57641	-	Download	-
57662	Download	Download	Download

In the WuTility-Configuration menu select the parameter "Restore saved configuration".



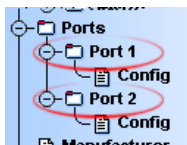
Select the respective XML file and confirm your selection by clicking on OK.



The device is now configured for operation with the CO2 sensor 57018.

Manual method:

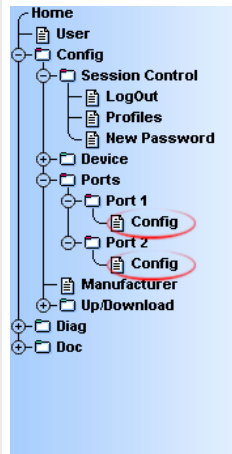
Log in to the configuration interface of the device in the Web browser and set the respective port input to 0-10V.



Select Sensor: 0 - 10V
 Disconnect

Zwischenspeichern

For 0% scaling set the value "0" and for 100% scaling the value "2000".



Config >> Ports >> Port 1 >> Config

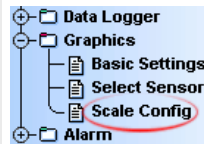
Unit :

Scale 0% : Anzeigewert bei 0%

Scale 100% : Anzeigewert bei 100%

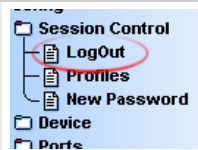
Freier Speicher: 49739 Bytes

Adjust the parameters for the graphical output to the sensors.



	unit	min	max
Scale 1	<input type="text" value="ppm"/>	<input type="text" value="0"/>	<input type="text" value="2000"/>
Scale 2	<input type="text" value="ppm"/>	<input type="text" value="0"/>	<input type="text" value="2000"/>

In the logout menu store the settings you have made.



Alle neuen Einstellungen speichern.

The device is now configured for operation with the CO2 sensor 57018.



We are available to you in person:

Wiesemann & Theis GmbH
Porschestr. 12
42279 Wuppertal
Phone: +49 202/2680-110 (Mon.-Fri. 8 a.m. to 5 p.m.)
Fax: +49 202/2680-265
info@wut.de

© Wiesemann & Theis GmbH, subject to mistakes and changes: Since we can make mistakes, none of our statements should be applied without verification. Please let us know of any errors or misunderstandings you find so that we can become aware of and eliminate them.

[Data Privacy](#)