

Data sheet:

Windows COM Port Redirector

Article no.: 00102

free

Links to Com-Servers

Simply route your serial COM port into the network

Whether it's measuring, automation or building technology, the number of serial communicating devices with their associated control tools is enormous. One drawback to connecting these devices to the PC is the relatively short permissible distances and the cumbersome cable installation. Add to this the fact that hardly any modern PCs are still equipped with COM ports and that virtualizations using VMWare, HyperV and VirtualBox are becoming increasingly popular. The W&T COM Port Redirector provides an elegant workaround to this dilemma. Under Windows it provides up to 255 virtual COM Ports whose devices are distributed over Com-Servers in the TCP/IP network - if necessary worldwide and if desired also TLS-PSK encrypted. Already written serial software, even if already years in service, becomes network capable without having to write a single line of code. An added bonus of this solution is the simultaneous galvanic isolation between computer and the respective terminal device.

Properties

Function Overview

- **UP to 255 COM ports per computer**
- **Supports virtual systems under VMWare, HyperV, VirtualBox etc.**
- **Automatic setting of transmission parameters on the Com-Server**
- **Network connection TLS-PSK encrypted (optional)**
- **Supported Windows environments:**
 - XP/7/8/8.1/10/11 incl. all 64-bit and Server Editions
 - NT4.0, 2000
 - Win 9x/ME
- **Automatic inventorying of Com-Servers**
- **Supports dynamic IP addresses in the Internet**
 - Full TCP communication
 - DNS name resolution



Wish for something!

[Your suggestions for improvement and additions](#)

Versions

System requirements/versions

The COM Port Redirector is available in three versions for Windows 95/98/ME, Windows NT/2000 as well as all newer Windows versions from XP and higher. It can be installed in just a few steps and without restarting the computer: Install driver, link virtual COM to the IP address or URL, and connect the serial device with the Com-Server to the network ... that's it! The application opens as usual, for example, the COM3 port, which however is now no longer local on the computer, but rather is located somewhere in the network.

COM Port Redirector Plug & Play	COM Port Redirector Legacy	COM Port Redirector Win 95/98/ME
... for all Com-Servers & current Windows versions	... for all Com-Servers, LAN Modem and Soft Links under Windows NT and higher	... for Com-Servers under Windows 95/98

	COM Port Redirector Plug & Play	COM Port Redirector Legacy	COM Port Redirector Win 95/98/ME
	... for all Com-Servers & current Windows versions	... for all Com-Servers, LAN Modem and Soft Links under Windows NT and higher	... for Com-Servers under Windows 95/98

	Download EXE - approx. 15.8MB	Download EXE - approx. 3.91MB	Download [on request]
	Revision list	Revision list	Revision list
Win XP, 7, 8, 8.1, 10, 11 incl. 64-bit and Server editions	YES	YES (as legacy ports)	--
Windows Plug & Play support	YES	--	--
Encrypted transmission via TLS-PSK	YES	YES	--
Support for W&T LAN modems and W&T Soft-Links	--	YES	--
Windows NT/2000	--	YES	--
Windows 95/98/ME	--	--	YES

When sending serial protocols, such as Modbus, ensure that their timing permits network operation [with the mandatory latency times](#).

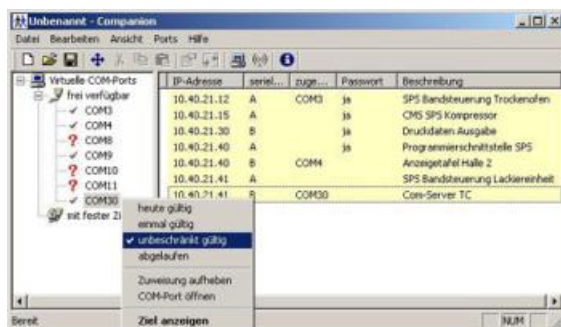
Go to practical example "[Controlling a solar telescope](#)"

Expanded functions

Companion-Tool for variable assignment of the COM ports

Although up to 255 COM ports are supported on Windows systems, many programs are static in operation and provide the user, regardless of the number of COM ports actually existing in the system, with only 9 or even 4 COM ports. By using the Companion Tool you can still connect a virtually unlimited number of terminal devices to such programs. Before starting the application simply drag 'n drop the IP address of the Com-Server to the desired COM port. That's it!

Companion is included in the standard installation of the W&T COM Port Redirector.



Virtual modem ports

(only COM Port Redirector Legacy, Art. No. 00102)

Comparable to Voice-over IP, [W&T LAN modems](#) are used wherever charged dial-up connections need to be replaced by the often already existing network infrastructure. Instead of the old modems, LAN modems are installed and then the dial-up number replaced by the destination IP address in the AT dial-up command... that's it! If the software side is a Windows application, you can eliminate the hardware LAN modem and instead use a virtual modem-modem port on the COM Port Redirector.

Soft-Link between 2 computers

(only COM Port Redirector Legacy, Art. No. 00102)

Imagine you have 2 Windows applications that can only exchange their data serially, but the computers have no free COM port available. The Soft-Link function allows you to make virtual serial connections over the Intra- or Internet, without any hardware. [Interested ?](#)

Article list

		*Net unit price for commercial users	
Windows COM Port Redirector Plug & Play (XP, 7, 8.x, 10, 11 incl. all 64-bit and Server Editions)	00111	free	↓
Windows COM Port Redirector Legacy	00102	free	↓
Windows COM Port Redirector Win 95/98/Me	00101	free	↓

* Our offering is intended only for commercial users. We will be happy to refer private end customers to trading partners through whom our products can be purchased.



We are available to you in person:

Wiesemann & Theis GmbH
Porschestra. 12
42279 Wuppertal
Phone: +49 202/2680-110 (Mon.-Fri. 8 a.m. to 5 p.m.)
Fax: +49 202/2680-265
info@wut.de

© Wiesemann & Theis GmbH, subject to mistakes and changes: Since we can make mistakes, none of our statements should be applied without verification. Please let us know of any errors or misunderstandings you find so that we can become aware of and eliminate them.

[Data Privacy](#)