






Data sheet:

Motherbox



Article no.: 50501

This article has been replaced by the expanded successor model Motherbox 3.

- Contact 
- Manual 
- Tools 
- Applications 
- Press photo 

Measurement data concentrator for distributed Web-I/Os incl. open Webserver for individual applications

Use the Motherbox to bundle measurement data from any number of analog and digital Web-I/Os as well as Web-Thermographs on one device. Simply specify for each available measuring point in the network an individual interval in which you want the current data to be automatically polled and archived in the internal memory of the Motherbox. Combine the archived measuring points into profiles and thereby generate measurement meaningful overviews which are tailored to your application.

Properties

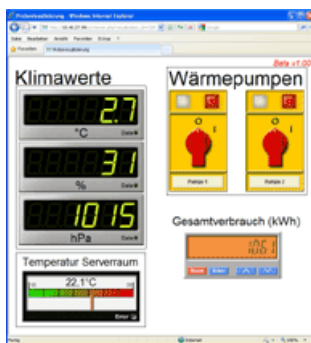
General function

Cyclical polling of the Web-I/Os results in a consolidated measurement database in the Motherbox. From here you can recall the history of measuring data profiles, individual measuring points and complete Web-I/Os directly in your browser, or access the measurement database for migrating the data into your application using for example ODBC and SOAP.

The internal web server also allows you to upload from your own web pages, which enables creation of web-based applications. For example you can prepare and display archived measurement data for a specific application.

General information

- **NEW!** Create interactive **visualizations** with the **Site-Creator** which can be opened in any browser



- Inventorying of Web-I/Os per **web-based WuTility**
- Central **database** with measurement values from any number of Web-I/Os, with access using **standardized interfaces** (browsers, ODBC, SOAP)
- Combine various Web-I/Os in measurement data profiles and **create application-specific** overviews
- **Use a web server for your own applications** and upload web and PHP pages to the Motherbox
- **Run PHP scripts** cron- and event-triggered (e.g. for **server** applications)
- **750MB for user files** (measurement database, user Web and PHP pages, etc.)
- Thanks to **web-based management** complete configuration and control using your browser
- Secure transmission using **HTTPS encryption**
- Combination of multi-color LED and button for **system status** and device reset
- Energy consumption **< 2.5W** at full system load
- Online **switching of the system language** between German and English
- **Conforms to standards both in office and industrial environments:**
 - High noise resistance for industrial environments
 - Low noise emission for residential and business areas
- **5 year guarantee**

Technical data

Network	10/100BaseT autosensing autocrossing IPv6 on request
Connections	1 x network (RJ45) 2 screw terminals for power supply (alternative to PoE)
LEDs	System status using multi-color LED Current network speed and data transfer
Button	Manual device reset
Supply Voltage	Power-over-Ethernet (PoE) 24 ... 48V DC (+/-10%) using screw terminals
typ. current draw	100mA @ 24V 50mA @ 48V
Storage temperature:	-40 ... 85°C
Operating temperature:	Row mounting: 0 ... 65°C Non-row mounting: 0 ... 70°C
Housing	Plastic compact housing (105 x 75 x 22mm) Integrated DIN rail mount
Weight	approx. 140g
Main processor	Coldfire MCF54450 incl. memory management unit (MMU) Watchdog timer internal and external
Memory	NAND flash: 1GB (700MB available for user data) DDR2: 128MB
Operating system	Linux, kernel: 2.6.23
Installed software	FTP server: vsftpd v2.1 Web server: lighttpd v1.4 SMB server: Samba v2.2 PHP interpreter: v5.3 Database: SQLite v3.6 Time server: openntpd v3.9
Scope of delivery	Motherbox Quick start manual W&T Product CD



We are available to you in person:

Wiesemann & Theis
GmbH
Porschestra. 12
42279 Wuppertal
Phone: +49 202/2680-110 (Mon.-Fri. 8 a.m. to 5
p.m.)
Fax: +49 202/2680-265
info@wut.de

© Wiesemann & Theis GmbH, subject to mistakes and changes: Since we can make mistakes, none of our statements should be applied without verification. Please let us know of any errors or misunderstandings you find so that we can become aware of and eliminate them.

[Data Privacy](#)