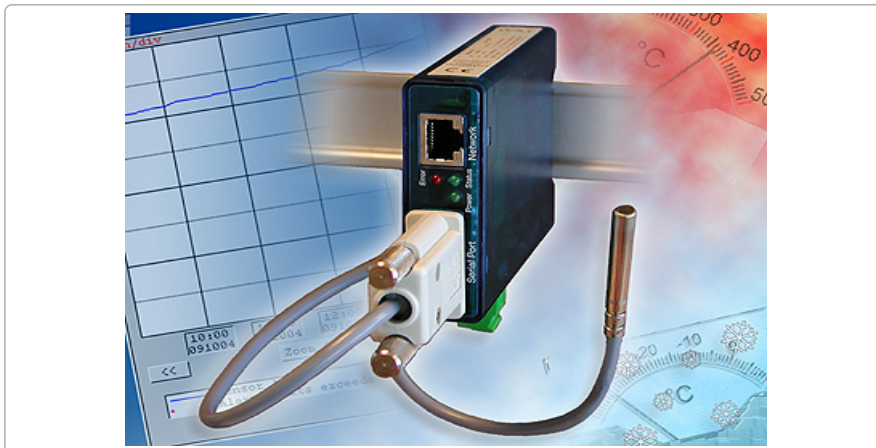


Data sheet:

Web-Thermograph NTC



Article no.: 57609

This article has been replaced by the expanded successor model [Web Thermometer NTC](#).

- Contact
- Manual
- Tools
- Firmware
- Applications
- FAQs

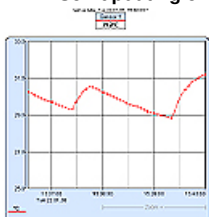
Monitor and graphically display temperatures

Example application: <http://klima.wut.de>

Properties

General information

- **NEW! Self-updating characteristic curve**



- Freely selectable line color
 - Freely selectable display size
 - Extreme value or current value display
 - Various scales displayed
 - Automatic or manual scaling
- **Monitor temperatures and trends from a browser**
 - HTML page design user-variable
 - Direct access to current temperature value, e.g., for integration into other Web pages
- **SNMP temperature polling /Alarm traps** for incorporating into your existing SNMP management system
- **A new measurement is available every 4 seconds!**
- **E-mail for alarm or reporting functions**
- **Time synchronization via time server calibration**
- **Adapters:**
 - 10/100MBit
 - NTC temperature probe
- **Easy Start:**
 - Connect sensor and network cable
 - Connect supply voltage
 - Assign IP number
 - That's it!
- **Application examples:**
 - Monitor temperatures in the server room, network cabinet or office
 - Direct display of multiple measuring points in the browser via Java applet
 - Send alarms when limits are exceeded via e-mail, SNMP trap, TCP client, Syslog
 - Logging of the measured values via FTP, Excel file, e-mail attachment, internal memory
- **Software interfaces**
 - HTTP, Web browser
 - AJAX, JavaScript and Java applet
 - TCP and UDP sockets, client and server
 - OPC server
 - SMTP (e-mail)
 - SNMP (including trap)
 - SYSLOG
 - FTP (data logging)
- **Green IT:** Monitor efficiency of the server room climate control

- **Conforms to standards both in office and industrial environments:**
 - High noise resistance for industrial environments
 - Low noise emission for residential and business areas
- **5 year guarantee**

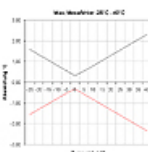
Technical data

Temperature sensor: NTC connection
 Network: 10 / 100BaseT autosensing
 IPv6 on request
 Supply voltage: 12-24V AC / DC using screw terminal

Measuring unit

Sensor: NTC 10k
 Measuring range: -45°C...75°C
 Resolution: 1/10°C

Maximum measuring error: $\pm 0.3^{\circ}\text{C}$, $\pm 5.1\%$
 (measuring unit + sensor)



Storage frequency: 1, 5, 15, 60 min
 Memory depth (832k): min. 14 weeks, max. 16 years
 Deviation of the internal clock: max. 4.32 min. / month (without time server calibration)
 max. 3 sec. (with time server calibration)

Other data

Measuring frequency: 4 seconds
 Galvanic isolation: Measurement inputs to network: min. 500 volts
 E-mail function: Mail for sending alarms or as reporting function
 Supply voltage: DC 12V .. 48V (+/-10%)
 AC 9Veff (-5%) - 24Veff (+5%)
 Current consumption: AVG: 200mA @12VDC, 100mA @24VDC, 100mA @20VAC
 Max: 240mA @12VDC
 Configuration interface: RS232 serial port, 9600 baud, 8 data bits, 1 stop bit, no parity
 Housing: Plastic compact housing, 105x75x22mm
 Weight: approx. 200g
 Ambient storage temperature: -40..+70°C
 Ambient operating temperature: 0 .. +60°C
 Scope of delivery: 1x Web-Thermograph NTC for top-hat rail mount
 1x NTC temperature probe

Please order power supplies separately as accessories



We are available to you in person:

Wiesemann & Theis
 GmbH
 Porschestra. 12
 42279 Wuppertal
 Phone: +49 202/2680-110 (Mon.-Fri. 8 a.m. to 5 p.m.)
 Fax: +49 202/2680-265
 info@wut.de

© Wiesemann & Theis GmbH, subject to mistakes and changes: Since we can make mistakes, none of our statements should be applied without verification. Please let us know of any errors or misunderstandings you find so that we can become aware of and eliminate them.

[Data Privacy](#)