

Data sheet:

## IP-Watcher 2x2 Digital



Article no.: 57654

This article has been replaced by the expanded successor model **IP-Watcher 2x2 Digital PoE**.

Contact
Manual
Tools
Firmware
Applications
Press photo

The IP-Watcher generates an alarm when network components no longer respond.

Devices are watched by means of cyclical pinging or regular opening and closing of a TCP port. When a fault occurs, switch an alarm output or report the event over the network, e.g. via email or SNMP trap. In addition, the IP Watcher provides an SNTP service through which any network station can obtain the current time information.

### Properties

#### One box for any application:

- **Small System**  
Using the integrated Web server the IP-Watcher can be configured directly through the browser. It is also possible to monitor the configured alarms and acknowledge pending messages using the Web interface. Additional functions, such as sending email messages, enables implementation of autonomous applications out-of-the-box.
- **Big System**  
Standard protocols and interfaces such as OPC, SNMP and SYSLOG enable trouble-free integration into existing systems (e.g. monitoring via SNMP with [Nagios](#)). The digital outputs can be used to report faults even on already present automation devices having digital inputs.

#### General information:

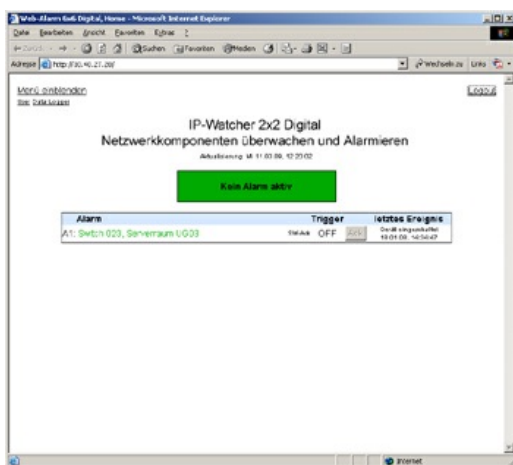
- **Network connection**
  - 10/100BaseT autosensing, RJ45
- **PoE (Power over Ethernet)**
  - Phantom power using data pairs
  - Power provided by unused wire pairs (spare-pair power)
- **Using external power supply**
  - Supply from external power supply possible as an alternative to PoE
- **Web-based management**
  - Configuration of the system parameters
  - Self-refreshing view of the alarm, input and output states
  - Acknowledge pending alarms from the browser
  - Definition of alarm conditions
- **4 freely configurable alarms**
  - Triggers when configured IP addresses or host names cannot be reached
  - Monitoring of up to 250 IP addresses possible
  - Alarm options: E-mail, SNMP trap, UDP and TCP client, Syslog messages, FTP
  - Optional acknowledgment via digital input or using the Web interface
- **2 digital outputs in 6V-30V industry standard for local alarm issuing**
  - Current sourcing FET
  - Short-circuit-protected by virtue of thermal safety fuse
- **2 digital inputs in industry standard usable as acknowledgment input**
  - Type 1, current sinking in accordance with IEC 1131-2
  - Protected against polarity reversal
- **SNTP time server**
  - Current time information is passed using SNTP (Simple Network Time Protocol)
  - Service provider for any requesting network station
- **Online Web interface language selection**
  - Deutsch
  - English
- **Conforms to standards both in office and industrial environments:**
  - High noise resistance for industrial environments
  - Low noise emission for residential and business areas
- **5 year guarantee**

## Technical data

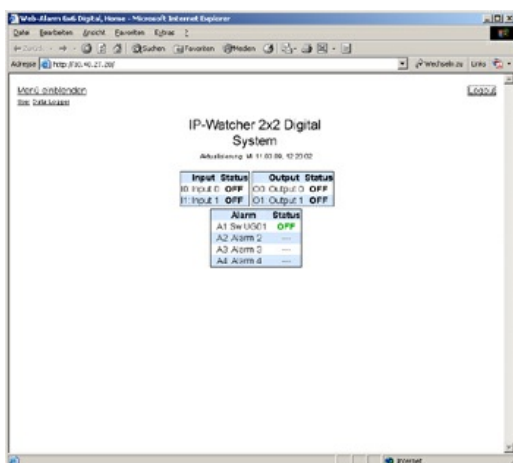
Network:	10/100BaseT autosensing, RJ45 IPv6 on request
Alarms:	4 alarms for local and/or remote messaging
Response times:	Data and switching traffic: typically 12 ms
Digital outputs:	2 x Digital Out 6V-30V, 500mA Short-circuit-protected
Digital inputs:	2 x Digital In, max. input voltage +/-30V protected against reverse connection within this range Switching threshold 8V +/- 1V "On" current = 2.2 mA
Adapters:	2x screw terminal for power (alternative to PoE) 6-point screw terminal for IOs
Galvanic isolation:	Digital-IO's - Network: min. 1000 V
LEDs:	- Status of the network connection - Current IO state - Device status
Power supply:	Power-over-Ethernet (PoE) or via screw terminal with DC 18V-48V (+/-10%) and AC 18Veff-30Veff (+/-10%)
Storage temperature:	-25°C-70°C
Operating temperature:	0°C - 60°C
Housing:	Plastic housing for DIN rail mount 105 x 75 x 22mm (lxwxh)
Weight:	approx. 140g
Scope of delivery:	1 x IP-Watcher 2x2 Digital incl. Alarm-Management-Software 1 x Quick Guide 1 x W&T product CD

## Screenshots

### Screenshots



Monitor the status of the configured alarms directly from the browser.  
Alarm acknowledgments can be performed directly on the Web interface by mouse-click.  
The display is self-refreshing and therefore always current.



Additional overview of the status of the in- and outputs,  
as well as of the set alarms.



We are available to you in person:

Wiesemann & Theis  
GmbH  
Porschestra. 12  
42279 Wuppertal  
Phone: +49 202/2680-110 (Mon.-Fri. 8 a.m. to 5  
p.m.)  
Fax: +49 202/2680-265  
info@wut.de

© Wiesemann & Theis GmbH, subject to mistakes and changes: Since we can make mistakes, none of our statements should be applied without verification. Please let us know of any errors or misunderstandings you find so that we can become aware of and eliminate them.

[Data Privacy](#)