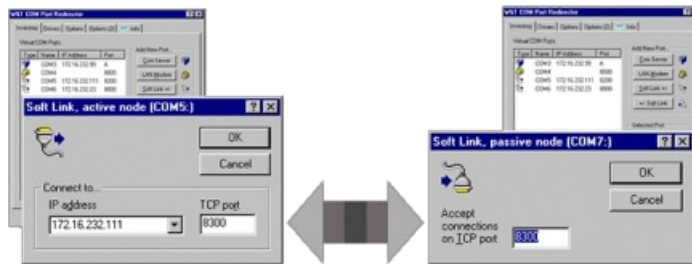


Data sheet:

PC-PC Soft-Links



Article no.: 58136

free

Computer-computer couplings over virtual COM Ports:

Properties

W&T Soft-Links allow Windows programs whose communication normally takes place over local COM ports to use the network. Opening the virtual COM ports establishes a TCP connection between the two computers. Your application becomes network-compatible without having to change a single line of program code. Up to 256 COM ports are made available in this way.

Simply install the Soft-Link driver on both PCs running Windows NT/2000/XP/Vista/7 and add a virtual COM port. You're done! The software will run at no charge for 30 days, after which a license must be acquired for installation.

Would you like to redirect a virtual COM port to one of our Com-Servers that links your device to the network?

[To W&T COM Port Redirector](#)

System requirements

- Operating system Windows NT 4.0/2000/XP/Vista/7 incl. 64-bit and server editions.
- Network card (Ethernet)
- Installed TCP/IP stack

♥ Wish for something!
Your suggestions for improvement and additions


Software (COM Port Redirector Legacy) incl. 30-day demo

[Download](#)

Article list

PC-PC Soft-Links

(Unfortunately, this article cannot be ordered as a sample, but you can find a 30-day demo version for free downloading [here](#).)

*Net unit price for
commercial users
58136 98.00€ 

* Our offering is intended only for commercial users. We will be happy to refer private end customers to trading partners through whom our products can be purchased.

mistakes, none of our statements should be applied without verification. Please let us know of any errors or misunderstandings you find so that we can become aware of and eliminate them.

[Data Privacy](#)