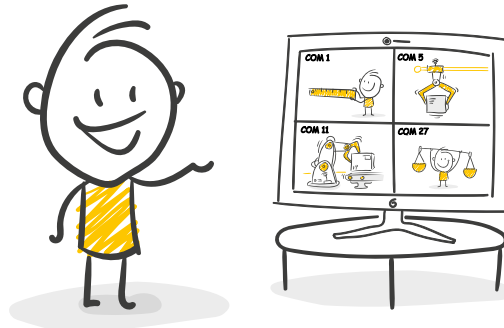


Topic:

All topics

# Incorporating serial devices into virtual systems



Virtualizing computer systems is sensible in many cases for reasons of both cost and security. However, if the virtualized system is communicating with serial devices (e.g. medical/weighing/measuring technology or wind power/photovoltaic systems etc.), there is the problem that the usual virtualization platforms provide insufficient support.

But the network connection of virtual guest systems is for the most part quite a mature approach, is stable and therefore also a good candidate for transporting serial communication. Using a Com-Server on the serial device side and a virtual COM port in the virtual machine, the serial data are simply and transparently tunneled through a network connection - unnoticed by the application, the serial device or the virtualization platform.

## More on the topic

### Windows COM Port Redirector Legacy

Make your serial software network-enabled without changing a single line of code.

### Pseudo-TTYs under Linux

Make your serial Linux application network-compatible with pseudo-TTYs and Com-Servers.

### Controlling a solar telescope

Collect data centrally and make it available anywhere in the world, configure and control the telescope remotely.

## Products



Com-Server++

1x RS232/RS422/RS485



Com-Server PoE 3x Isolated

3x RS232/RS422/RS485

none of our statements should be applied without verification. Please let us know of any errors or misunderstandings you find so that we can become aware of and eliminate them.

[Data Privacy](#)