

Application for Com-Server:

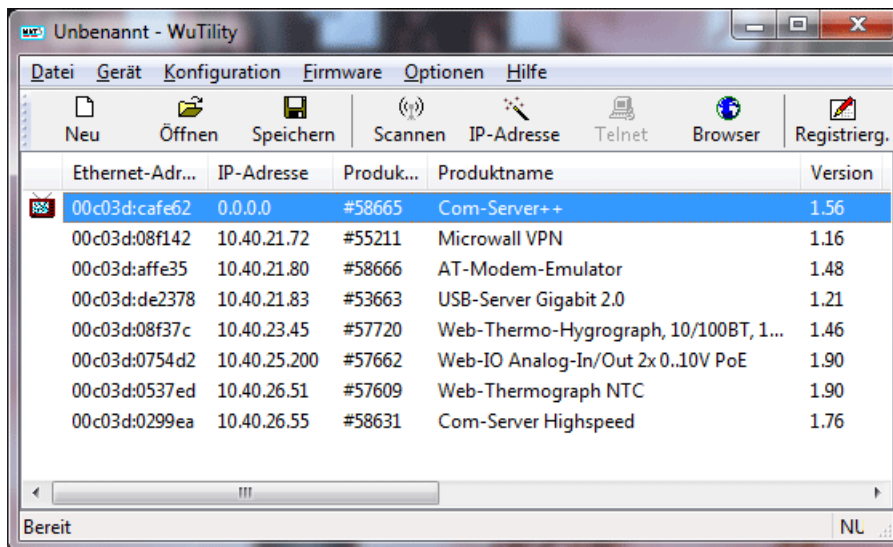
Assign IP addresses

Static IP address assignment using WuTility

To assign a static IP address to W&T network products such as Com-Servers, Web-IOs and Web Thermometers, you can go to wut.de/wutility and download the WuTility tool.

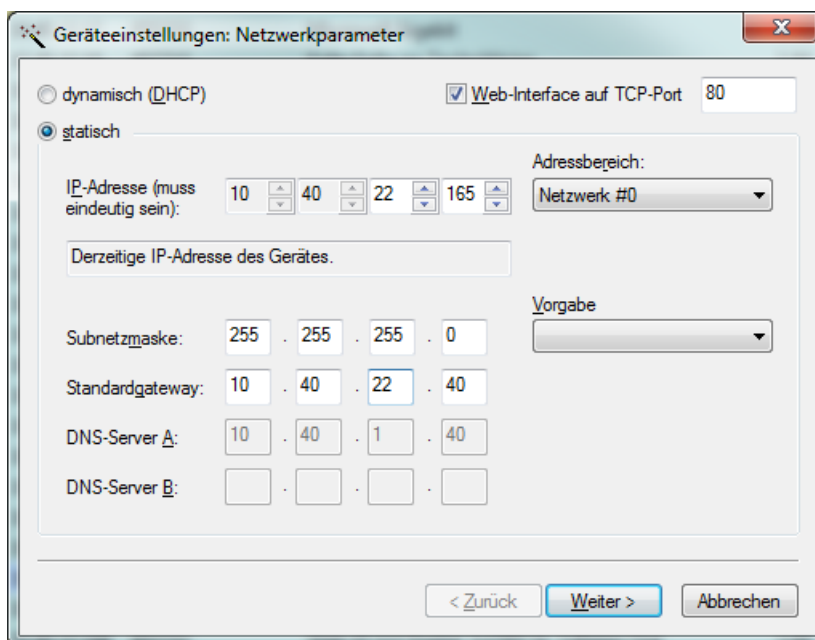


- After successful installation (under Windows only) you can start WuTility.



WuTility lists all the found W&T network products. By default the W&T components all have IP address 0.0.0.0. In networks with a DHCP server it can happen that the Web-IO is immediately assigned an IP address, i.e. 0.0.0.0 is not displayed. If there are multiple entries in the list, you can unequivocally identify the device you are searching for using the Ethernet address (see white sticker on the enclosure).

- Select the desired entry and click on the icon *IP address*.



- Now enter the desired IP parameters and click on *Next*. The W&T component is now accessible in the network under the assigned IP address.

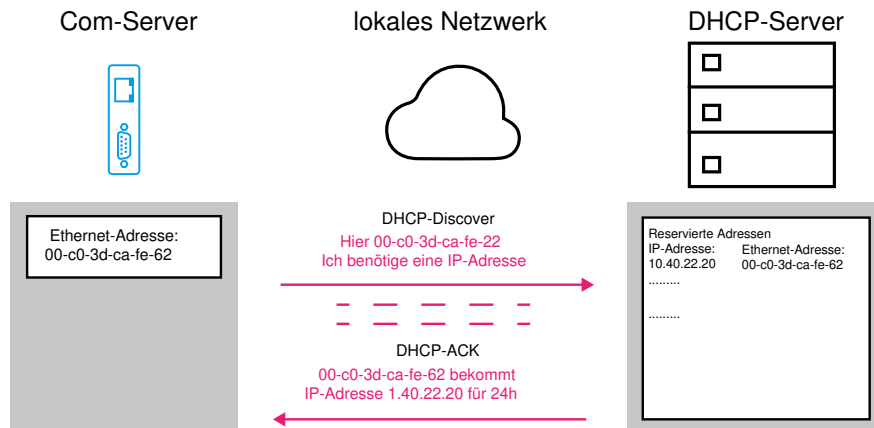
IP address assignment using DHCP

By default all W&T network products are preconfigured so that they send a DHCP request when starting up to request an IP address from the DHCP server.

In addition other parameters such as the subnet mask, gateway, DNS server and others are sent. It all works of course only if there is a DHCP server active in the network. In most networks that open internet access with a DSL router, the latter also functions as a DHCP server.

Without a special configuration of the DHCP server one cannot be certain that the network members always have the same IP address assigned. This is fatal especially when server services are used, such as with Com-Servers, Web-IOs and Web Thermometers, where one doesn't know exactly when and at which IP address the device can be reached.

To overcome this, reservations can be configured in the DHCP router by means of which a device is recognized by its Ethernet address and thereby always is given the reserved address.



We are available to you in person:

Wiesemann & Theis GmbH
Porschestra. 12
42279 Wuppertal
Phone: +49 202/2680-110 (Mon.-Fri. 8 a.m. to 5 p.m.)
Fax: +49 202/2680-265
info@wut.de

© Wiesemann & Theis GmbH, subject to mistakes and changes: Since we can make mistakes, none of our statements should be applied without verification. Please let us know of any errors or misunderstandings you find so that we can become aware of and eliminate them.

[Data Privacy](#)